

Application

KKWT penstocks are available in various forms and are used in surface, sewer and process water systems.

Operation

The KSA-MD is a tried and tested penstock type, as it has been a long-standing product supplied by KWT. The range has been recently extended to include a lighter-duty penstock (KSA-LD) and a heavier duty penstock (KSA-HD), however the KSA-MD continues to be a very popular product for the majority of applications.

The penstock consists of a vertically sliding door that closes a round opening, moving within a stainless steel 316L frame with HDPE guides. The seal between the door and frame is achieved through an EPDM lip seal positioned in the moving plate that retains up to 5MwC of water pressure from both sides.

The penstock is supplied with a non-rising spindle as standard, however on request the penstock can also be supplied with a rising spindle. Although the wall mounted type is the most popular, we can also supply these with pipe and flange connections.

Benefits

Circular, square, rectangular or ellipse openings available

Virtually no maintenance.

Easy to install.

Circular models available from stock.

Various mounting methods available, wall/pipe/flange mounted.



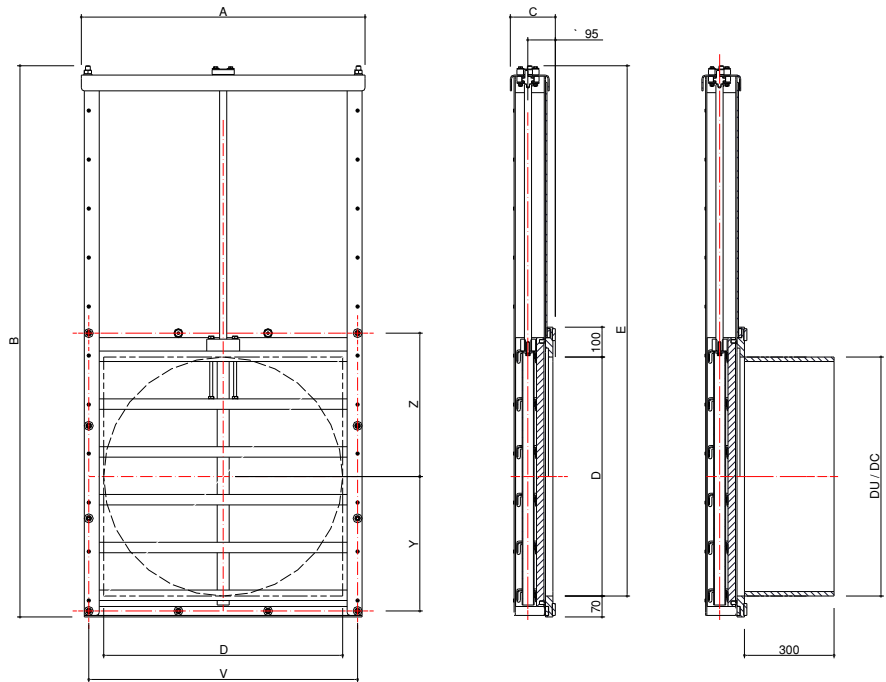
Specifications



Passage:	Ø 100 mm to Ø 800 mm
Operating pressure:	5 MwC on/off seating as standard
Operation method:	Manual or through actuator
Operation point:	KWT connection ("half moon")
Movement mechanism:	Non-rising spindle
Higher pressures and larger dimensions on request.	

Materials

Moving plate:	HDPE with SS316L stiffeners
Spindle:	SS 316
Spindle block:	POM
Bearing ring:	OLG
Back plate:	HDPE
Seals:	EPDM
Mounting material:	SS316
Other materials on request.	

KWT® Medium pressure penstock type: KSA-MD 100 t/m 800



NW mm.	O D mm.	P DU mm.	BS DC	A mm.	B mm.	C mm.	E mm.	V mm.	Y mm.	Z		
	110/800		±	D +150	(2XD) +250		(2XD) +180	D +100	(0,5D)+50	(0,5D) +80	D+35)/6	
100	110	110		260	470	130	400	210	105	135	24	10
125	125	125		275	500	130	430	225	112,5	142,5	26	10
150	160	160		310	570	130	500	260	130	160	32	10
200	200	200		350	650	130	580	300	150	180	39	10
250	250	250		400	750	130	680	350	175	205	47	10
300	315	315	290	465	80	130	810	415	207,5	237,5	58	15
400	400	400	390	550	1050	130	980	500	250	280	72	20
500	500	500	490	650	1250	130	1180	600	300	330	89	30
600	600	630	590	750	1450	145	1380	700	350	380	105	45
700	700		690	850	1650	155	1580	800	400	430	122	55
800	800		790	950	1850	170	1780	900	450	480	139	70

Description for tenders

Penstock, type KSA-MD 100 t/m 800

Penstock, type KSA-MD 100 to 800

Manufactured by: KWT Waterbeheersing

Materials: HDPE, SS316, EPDM and POM

Standard culvert: Ø 100 mm to Ø 800 mm

Operating pressure: 5 MwC on/off seating

The penstock is provided with a non-rising spindle as standard. It has an OLG spindle bearing.

It has an HDPE back plate. It has an HDPE moving plate provided with RVS316L stiffening with a POM spindle block.

The mounting material and the spindle are made of SS316. The seal between the moving and back plate consists of an EPDM lip seal.

